

EDUCATION FOR LIFE SCRUTINY COMMITTEE

5 JULY 2016

Y GWYNDY DEVELOPMENT

Presentation by :

Bleddyn Hopkins, Assistant Director

Lynn Griffiths, Headteacher, Ysgol Gynradd Gymraeg Caerffili

Owain ap Dafydd, Headteacher, Ysgol Gyfun Cwm Rhymni

A greener place Man gwyrddach



WHY ?

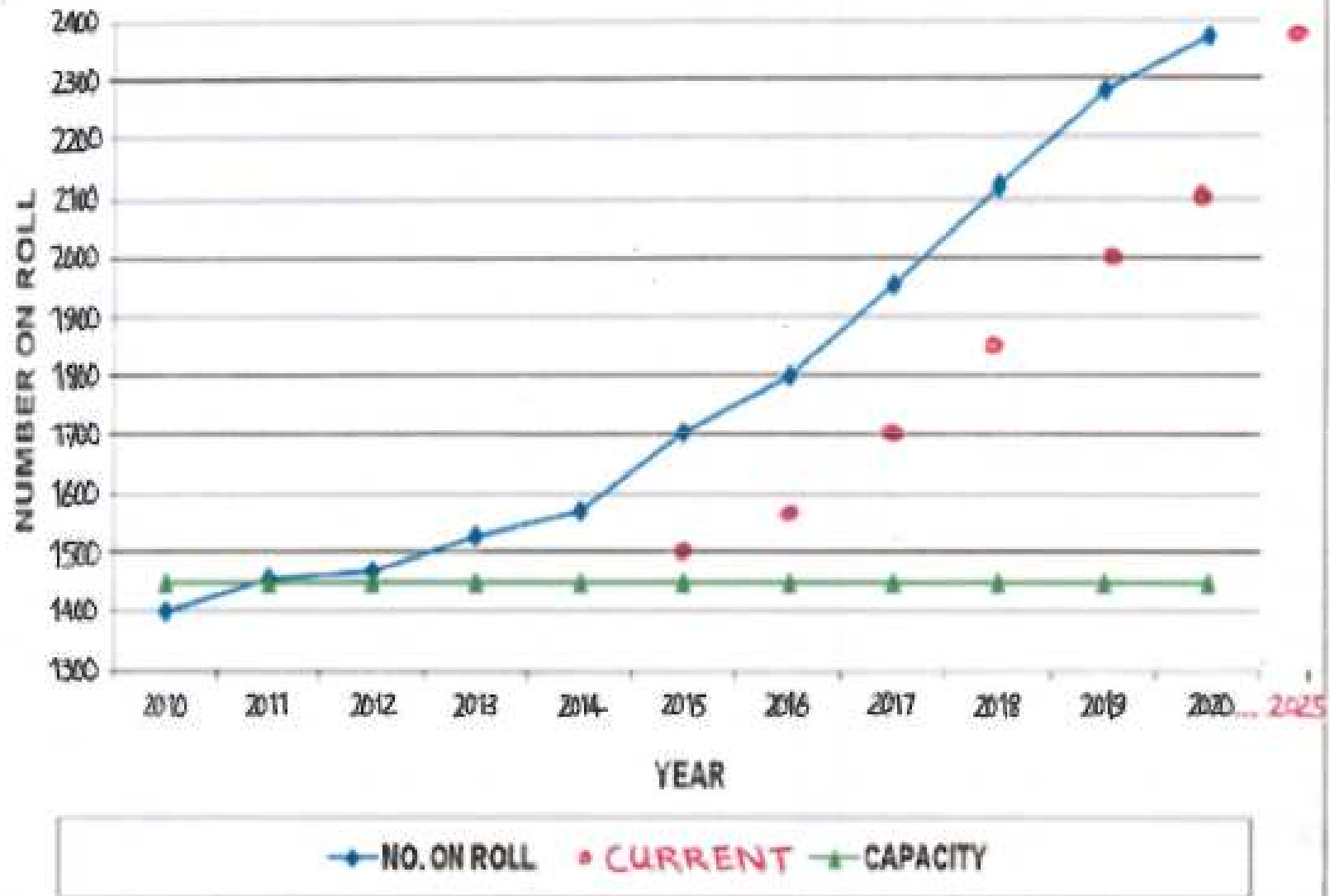
To provide for:

- Increased demand for Welsh Medium Education in CCBC,
and
- Fit for Purpose Accommodation for YGG Caerffili
(3-11 school)

A greener place Man gwyrddach



PROJECTIONS FOR YSGOL GYFUN CWM RHYMNI (2015)





Building Consultancy
Yng Nghorffwrdd Adolfa

Y Gwyndy

FS Flying Start/Early Years 0, 1
£300K, Complete April 2018

- 1** Secondary 15/18
£2M, Complete August 2013
- 2** Primary 3/41
£5.5M, Complete August 2018
- 3** Secondary 15/18
£5.4M, Complete December 2015
- 4** 3G Pitch and Hard Play
£1.5M, Complete August 2018

PROJECT MILESTONES

November 2011 – SOP2 Bid

December 2011 – Approval (£20m project, funded 50/50 by WG & CCBC)

2012 – Project commencement

September 2013 – Phase 1 (Refurbishment of Phoenix Block) 200 secondary places

September 2015 – New replacement YGG Caerffili

January 2016 – New secondary build 700 places

May – October 2016 – Phase 4 (3G pitch & hard/soft play areas)

End 2016 – Welsh Medium 0-18 campus, 1350 pupils (3-18) plus Flying Start)

A greener place Man gwyrdach

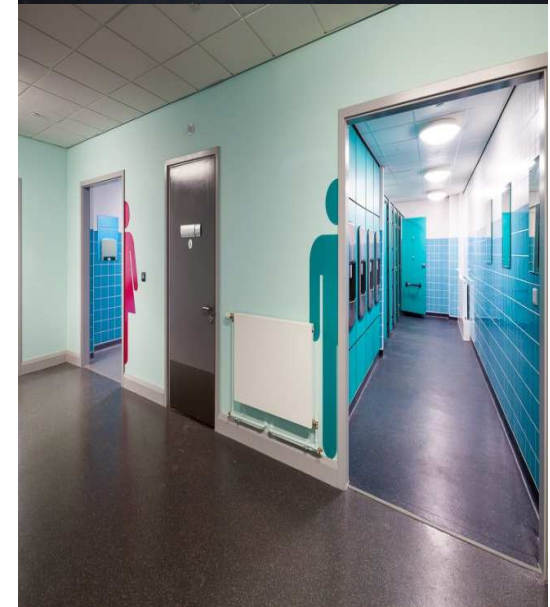
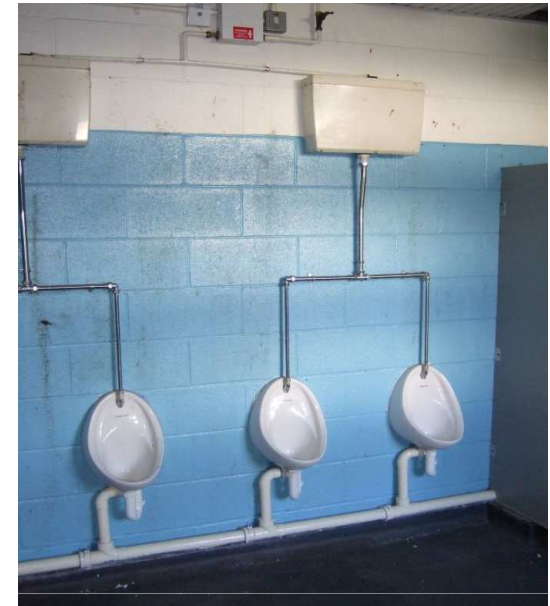




Before and After (1)



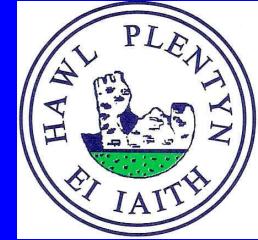
Before and After (2)





Ysgol Gymraeg Caerffili
Report for the Local
Education's Scrutiny
Committee
Lynn Griffiths
Head teacher

Teaching and Learning



- All classes are now 30% larger in terms of floor space.
- All classes have better ventilation are lighter and have better acoustics.
- All classes have lockers within the class to ensure that pupils take responsibility for their own equipment, school books, PE kit and clothes.





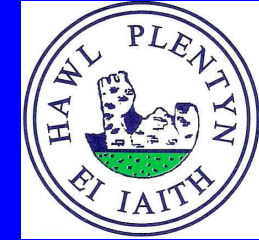




Nursery Area

- Spacious class room to enable pupils to settle well in our school.
- Plenty of room within and outside the class to deliver the Foundation Phase principles effectively.
- Plenty of space for parents to visit and meet with staff to develop strong partnerships and links with the community.
- Nursery area situated on the Southern elevation and therefore closer to the Flying Start site which will further enhance opportunities for joint activities/planning.



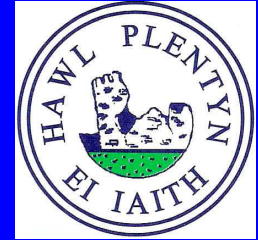


Break out areas

- These areas enable teachers to plan more effectively together.
- Pupils from different classes but the same age can complete work together to ensure consistency of provision.
- The needs of pupils with specific needs can be met far more sensitively.
- Pupils can carry out independent work/complete online assessments without being interrupted.



Foundation Phase Area



- Plenty of space.
- Access at all times in all weather conditions.
- Developing pupil's fine and gross motor skills.









Break out class

- Opportunities for Key Stage 2 pupils to undertake specialist work in this class or to further develop their research skills and become increasingly independent learners.
- Pupils can complete TASC activities which encourages the development of key skills - collaboration, communication, delegation, presentation to peers, evaluating performance and reflecting on their own learning.
- Specialist work includes music lessons with staff from Caerphilly Music Service.





Complex Spelling Sounds

Consonant sounds											
f	l	m	n	r	s	v	z	sh	th	ng	
ff	ll	mm	nn	rr	ss	ve	zz	ti			
ph	le	mb	kn	wr	se	c	se	ci		nk	

b	c	d	g	h	j	p	qu	t	w	x	y	ch
bb	k	dd	gg		g	pp		tt	wh			tch
	ck				ge							
	ch				dge							

Vowel sounds

a	e	i	o	u	ay	ee	igh	ow
	ea				ā-e	y	ī-e	ō-e
					ai	ea	ie	oa
						e	i	o
							y	

oo	oo	ar	or	air	ir	ou	oy	ire	ear	ure
ū-e			oor	are	ur	ow	oi			
ue			ore	er						
ew			aw							

Read Write Inc

two her * old * son

who said tall

I does you she *

all do to be *

by * we * of

my * go * so *

they once here was

want walk what

small worse the low

other watch brother

mother water above school

father

thinking

Have you used full stops correctly?

saying

Have you used interesting words?

Does your sentence have finger spaces?

Have you used connectors?

Are all your letters the right way round?

Does it make sense?

feeling



Specialist rooms

- We have a number of rooms within the site that enable specific targeted work to take place. Pupils can be withdrawn from classes to complete "Catch up" programmes.
- Specialist teams of teaching assistants now have a base to complete their work as opposed to sharing an area with other specialist teams.

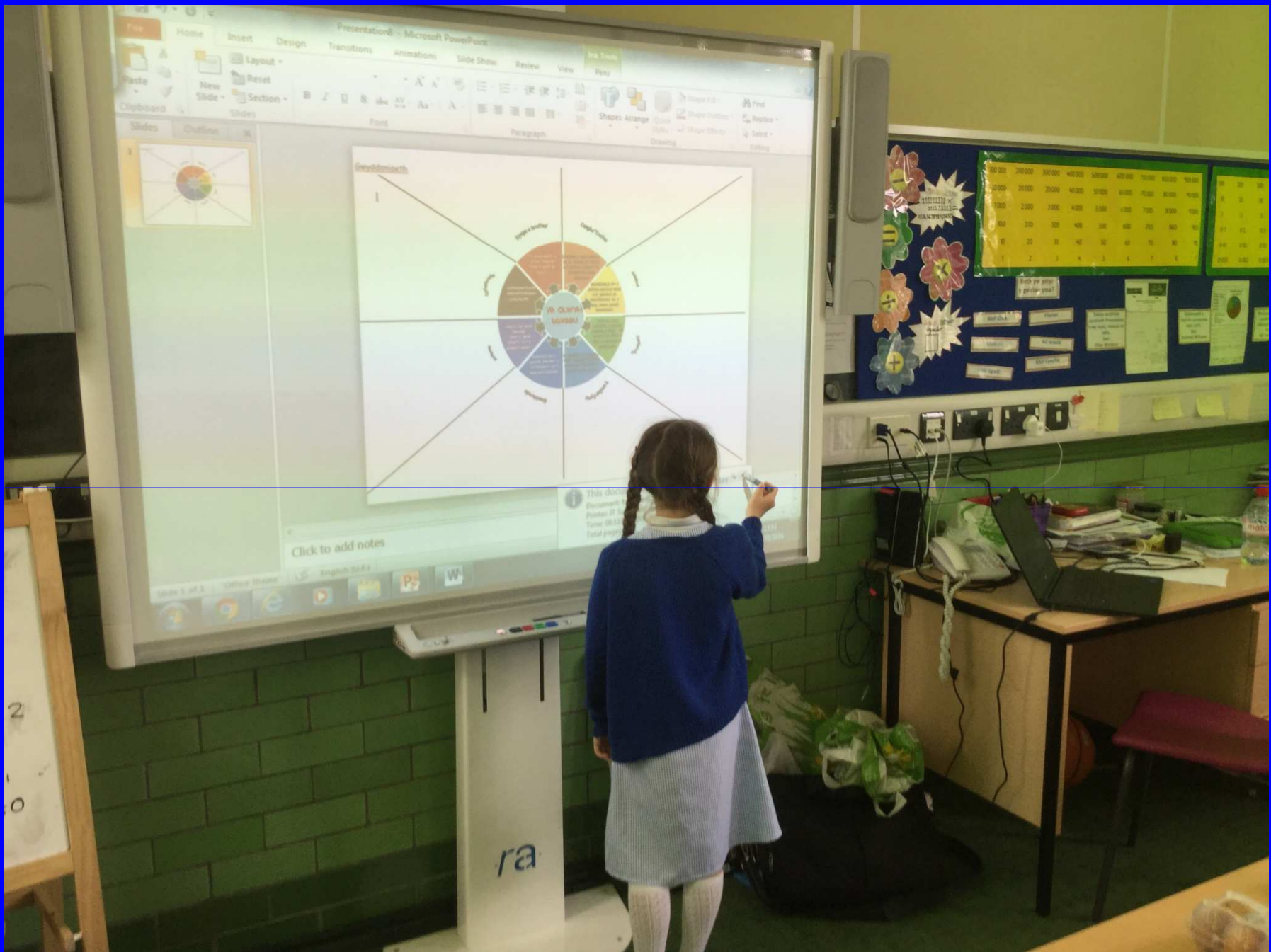




ICT Provision

- Designated class to develop as an ICT suite.
- Interactive white boards in every class.
- PC's within every class.
- This ensures that our pupils can access the new ICT Framework and develop the skills and knowledge required to succeed in the 21st Century.





Areas outside the building



- These areas enrich the curriculum for our pupils e.g Science/Wildlife garden.
- Pupils have led on the development of these areas.
- These areas also enable our pupils to socialise together outside the class during play time and dinner hour.







School Hall

- The hall enables us to have whole school assemblies where pupils can develop their presentation skills in front of their peers and parents.
- We are now able to ensure that our pupils have plenty of space for PE lessons in the winter months.
- We have been able to use our hall for all Christmas concerts for the first time. Specialist lighting and projector ensures that the quality of our productions are enhanced which further boosts our pupil's self esteem.



Transition to KS3



Transition between KS2 and KS3 is now far more effective as pupils share the same site. Pupils from each school however do not interact during the school day.







YSGOL GYFUN CWM RHYMNI



**CALON Y CYFAN YW
CYNNYDD Y DISGYBLION**

**PUPIL PROGRESS IS CENTRAL
TO EVERYTHING WE DO**



2002
Gellihaf





September 2013
85 Pupils

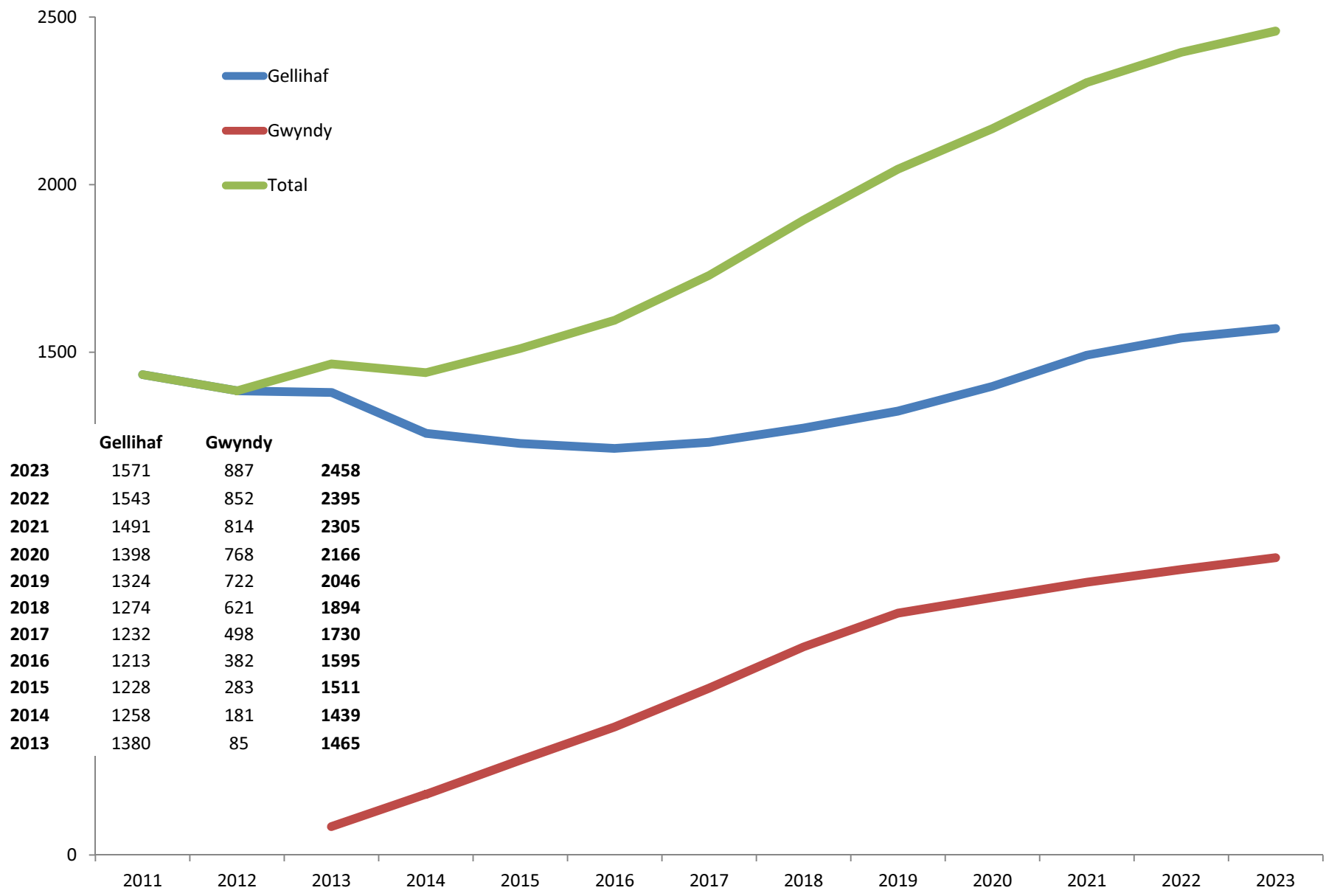




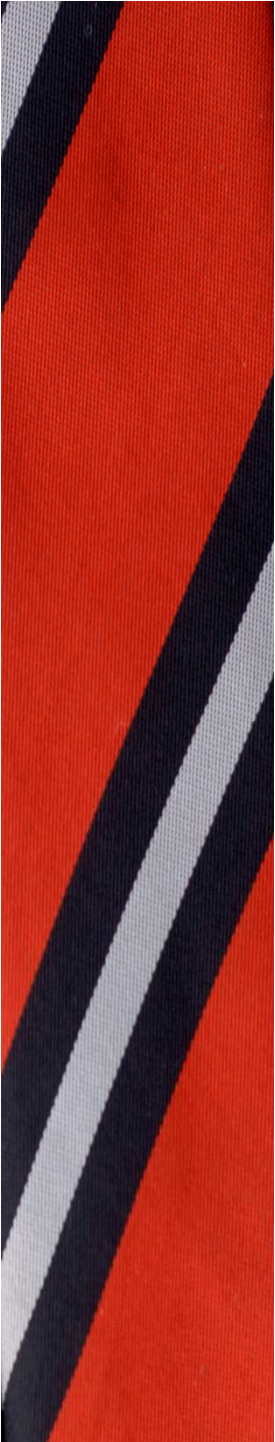
There are several phases to the Challenges we face:

- Significant growth in the size of the school
- Development of the 11-19 Gwyndy Site in Caerphilly
- Growth in the numbers of students and 14-19 curriculum and, specifically 16-19
- Curricular changes
- Budgetary challenges





	Gellihaf	Gwyndy	
2023	1571	887	2458
2022	1543	852	2395
2021	1491	814	2305
2020	1398	768	2166
2019	1324	722	2046
2018	1274	621	1894
2017	1232	498	1730
2016	1213	382	1595
2015	1228	283	1511
2014	1258	181	1439
2013	1380	85	1465



We have a vision which the Senior Management team and all of the staff have adopted and are committed to in terms of basic principles;

- Excellent Education
- Each pupil to reach his/her potential
- Effective partnership across all educational stakeholders
- Lead educational strategies (Pioneering)
- Each member of staff to achieve their potential





SUSTAIN STANDARDS

PIONEERING SCHOOL

SUCCESSFUL FUTURES

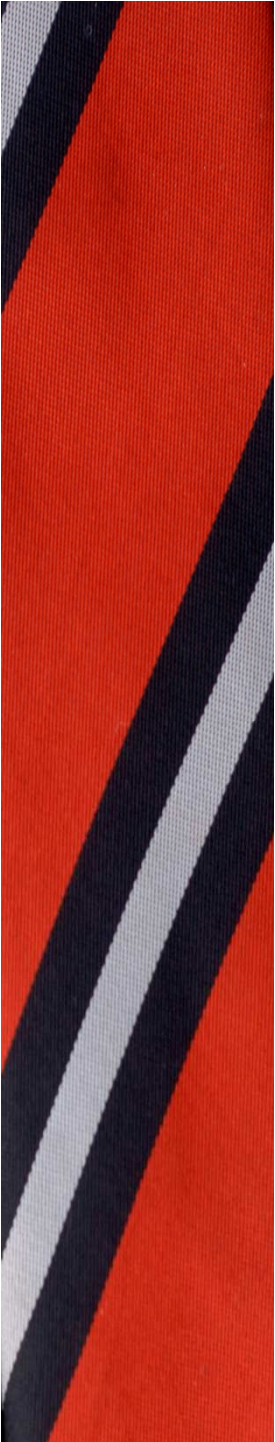


THE NEW DEAL

GLOBAL LEARNING

CREATIVE ARTS





✚ 2 sites 7 miles apart

❖ 1 site PFI

❖ 1 site LEA

2013-14

✚ 90 teachers

❖ 8 based at the Gwyndy site

❖ 8 traveling between sites

2016-17

✚ 110 teachers

❖ 19 based at the Gwyndy site

❖ 7 traveling between sites





Development

- Key Stage Four curriculum will be presented in September 2016
- Post 16 curriculum will be presented in September 2018
- Each Key Stage will have been presented by September 2020

Key Stage Four curriculum will be presented in September 2016

- Pupils on both sites will receive the same curriculum and the same option choices at KS4
- The KS4 curriculum will be offered to the Gwyndy pupils predominantly at the Gwyndy site
 - We estimate that offering the full non core options curriculum will cost an additional 1.5 teachers
 - Some very specialist subjects and minority subjects might be taught at the Gellihaf site



Key Milestones

August 2016 – GCSE Results

2016-17 Financial Year

August 2017 – GCSE Results

2017-18 Financial Year

August 2018 – GCSE Results

September 2018 – Successful Futures Curriculum

September 2018 – Sixth form – Y Gwyndy?

PIONEERING SCHOOL